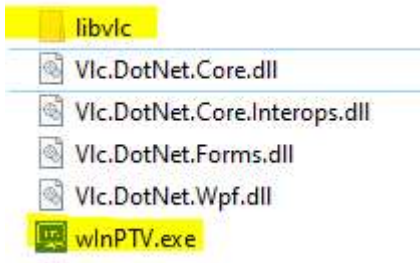


# wInPTV Users Guide

**Note:** This application does not provide any streaming content itself. You are on your own to find streaming providers.

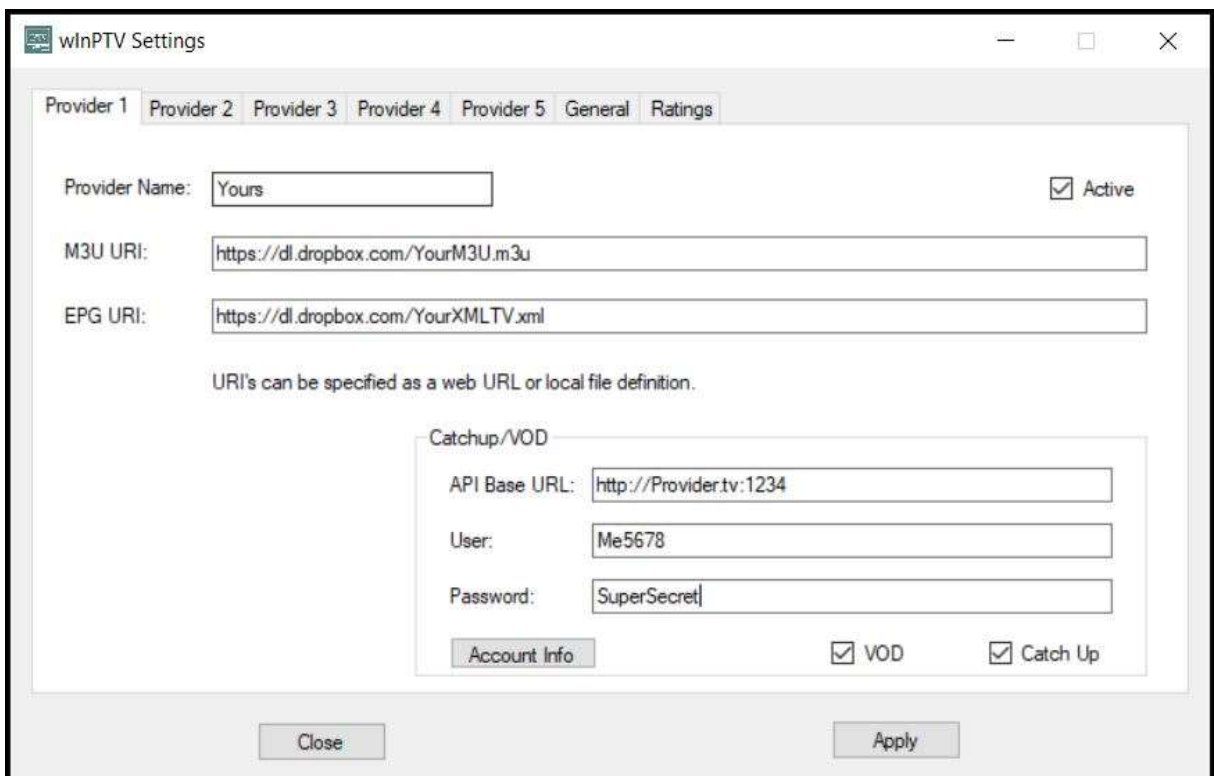
## Installation

- Unzip wInPTV.zip (<http://cm.jovialservices.me/wInPTV.zip> ) into a directory
- Unzip libvlc (<http://cm.jovialservices.me/libvlc.zip> ) into the wInPTV directory so it ends up looking like

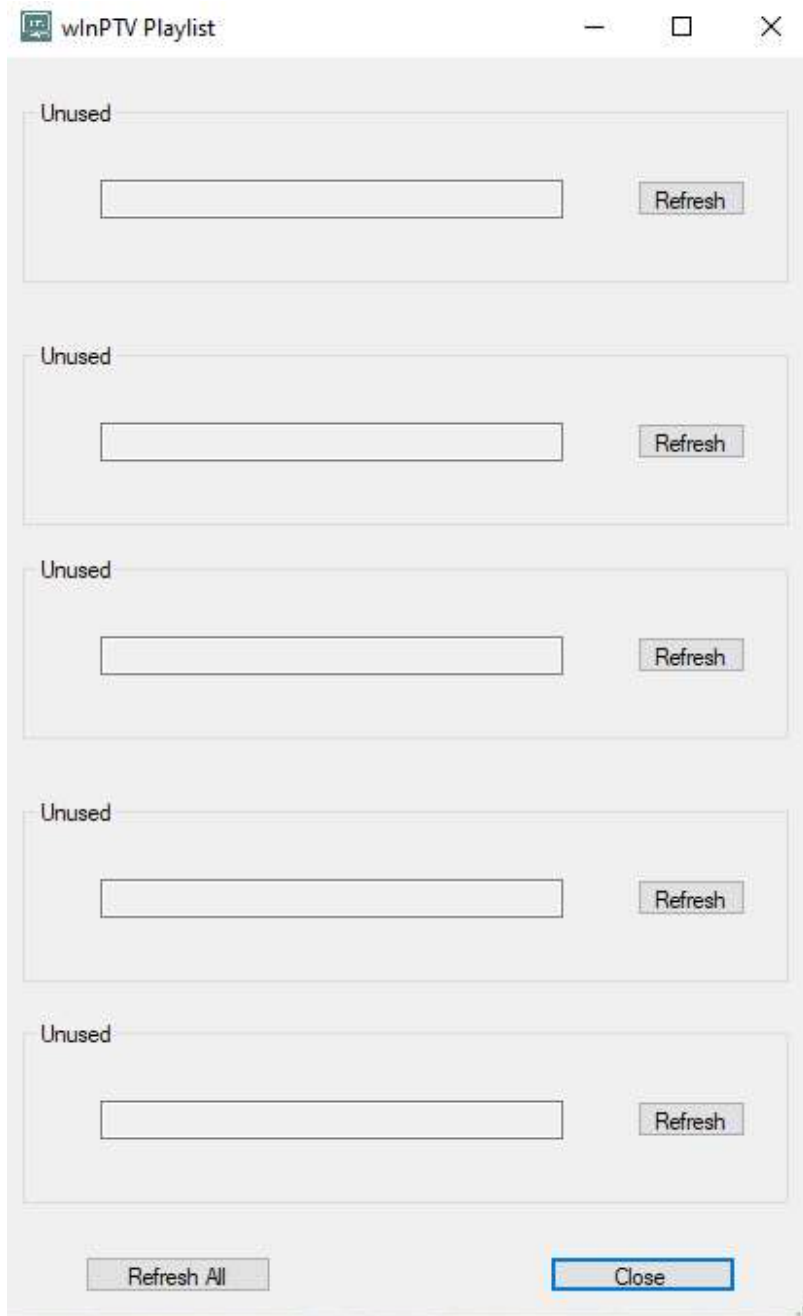


## Usage

- Run wInPTV.exe
- On the first run you do not have anything setup. So, the settings dialog will show first.



- Here you will configure up to 5 IPTV providers (one per tab) and their associated M3U and EPG URLs. The EPG color selections on the General tab come pre-populated. But feel free to change them as you wish. You can change this information at any time from the main wInPTV window. If you have the Refresh Providers on Startup checkbox checked, the providers will all be refreshed automatically every time wInPTV starts. The Reminder time is how long, in minutes, before a show you flagged as a reminder initiates the prompt.
- Next, the Playlist dialog will appear. This is where you refresh some or all of your providers.



- Now the main window appears. Things can be controlled from the menu, or by shortcut keys. The current shortcuts are:

EPG	Ctrl + G
Search EPG	Ctrl + E
Channel Select	F1
Find Channel	Ctrl + C
Settings	Ctrl + S
Toggle Fullscreen	Ctrl + F
Take Snapshot	F12
Stream Info	Ctrl + I
Exit	Ctrl + E
Toggle Pause	F2
Stop	F3
Previous Channel	F4
Toggle Chromecast	F5
Stop Recording	F6
Subtitles	F7
Volume Up	Ctrl + U
Volume Down	Ctrl + D
Toggle Mute	Ctrl + M
Playlist Load	Ctrl + L
Channel History	Ctrl + H

## **Recording**

A fairly simple recording system exists. It allows you to manually record, or record from an EPG entry. Note that scheduled recordings **do not** persist if you stop the wInPTV program.

### *Manual Recording*

Right clicking on a channel entry in the channel selection or EPG dialogs will allow you to setup a manual recording. A dialog will appear, and you will enter:

*Start Delay:* Minutes from now to start recording (0 means immediately).

*Record Time:* Minutes to record. Zero means the recording will not automatically stop. You will need to manually stop recording by pressing F6 or the Stop Recording menu option.

*Shutdown When Complete:* If this check box is selected, the Windows machine will shutdown after this recording completes.

## EPG Recording

Right clicking on a EPG entry presents you with 2 recording options. *Record* allows you to schedule the program to be recorded. *Record and Shutdown* is the same as Record, but the Windows machine will shutdown after the recording completes.

Note that *Record Start Time Offset in Minutes* value from the Settings dialog will start the EPG recording that many minutes before the scheduled start time of the program.

Also note that *Record Stop Time Offset in Minutes*, also set in the Settings dialog, will set the recording to stop that many minutes after the scheduled end time of the program.

You can schedule as many recordings as you wish, but note that only one program can record at any given time. What you are watching live in wInPTV, if anything, at the time of the recording(s) is irrelevant.

## Reminders

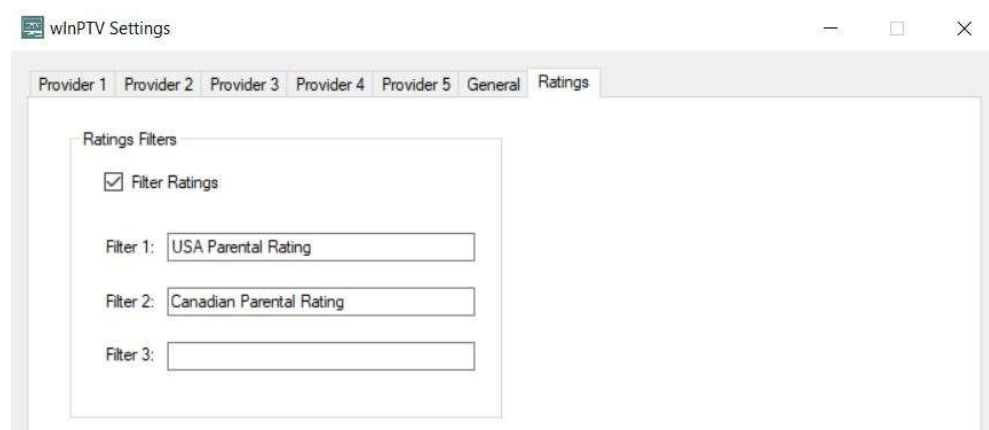
A reminder system is available. You access this from the EPG dialog. Right click on a show and you can set a reminder, or delete a reminder. When it is almost time for the show to begin (time configurable as *reminder time in minutes* on the settings dialog), and a reminder is set for the show, a messagebox will appear on the screen.

For a reminder, it will ask if you want to change to that channel now. If you press the Yes button it will change the channel for you. If you select No, the channel will not change. If no action is taken in a short period of time, the messagebox will auto-close and the channel will not be changed.

Note that reminders **do not** persist if you stop the wInPTV program.

## EPG Ratings

EPG guide sources will sometimes provide a long list of show ratings from different sources. Because of this, you can filter on which sources you would like to display. In the settings dialog, Ratings tab, you can set the desired ratings sources and only they will be displayed.




wlnPTV Electronic Program Guide

Start Date	Start Time	End Time	Program Name
Sunday, July 5, 2020	1:00 PM	3:00 PM	The Cars That Made America
Sunday, July 5, 2020	3:00 PM	9:00 PM	The Food That Built America <sup>new</sup>
Sunday, July 5, 2020	9:00 PM	11:05 PM	America: Our Defining Hours <sup>new</sup>
Sunday, July 5, 2020	11:05 PM	1:04 AM	The Food That Built America <sup>new</sup>
Monday, July 6, 2020	1:04 AM	3:09 AM	America: Our Defining Hours
Monday, July 6, 2020	3:09 AM	5:01 AM	The Food That Built America
Monday, July 6, 2020	5:01 AM	5:30 AM	NEW Sun Joe XTREAM Pressure Washer
Monday, July 6, 2020	5:30 AM	6:00 AM	Ninja Foodi - The Pressure Cooker that Crisps
Monday, July 6, 2020	6:00 AM	6:30 AM	Sore Joints?
Monday, July 6, 2020	6:30 AM	7:00 AM	Your Help is Needed Now!
Monday, July 6, 2020	7:00 AM	7:30 AM	Cyber Protection - Lifelock and Norton
Monday, July 6, 2020	7:30 AM	8:00 AM	Cyber Protection - Lifelock and Norton
Monday, July 6, 2020	8:00 AM	9:00 AM	The Swamp Ghost
Monday, July 6, 2020	9:00 AM	9:30 AM	Pawn Stars
Monday, July 6, 2020	9:30 AM	10:00 AM	Pawn Stars

**Pawn Stars** USA Parental Rating: TVPG Reality

09:00 - 09:30 (11/19/2015)  
 S12E10  
 A Civil War drum is brought into the shop; an 1834 book with the original rules of baseball; a customer brings in a 1970s skateboard.  
 Director(s): Russell McCarroll  
 Actor(s): Rick Harrison, Corey Harrison, Richard Harrison, Austin "Chumlee" Russell



Refresh Guide Close

### EPG Search

Type in the phrase to search for (case insensitive) in the top line and press the Search button. The entire guide will be searched (all providers) for the phrase and the results displayed in the grid. Selecting a line in the grid will populate the bottom section of the dialog with the program details. If more than one word is entered, the search will treat it as a phrase. So, for example if a program description is "The sky is blue" and you search for "sky blue", it will not match. However, searching for sky, or searching for blue will both match.

If you wish to check the quality of the channels found by EPG Search, select one of the results and press the *Get Stats* button. In 10 seconds, the FPS for the channel will be displayed as in the screenshot below.

winPTV Search Electronic Program Guide

mountain men

No Past Shows  Only Today

Provider	Group	Channel	Start Date	Start Time	End Time	Program Name
Boss gzp	Sports Networks	SPORTSMAN CHANNEL	Monday, July 6, 2020	1:00 PM	1:30 PM	Last of A Breed
Boss gzp	Networks	INSP TV	Monday, July 6, 2020	8:00 PM	9:00 PM	Mountain Men
Boss gzp	Sports Networks	SPORTSMAN CHANNEL	Tuesday, July 7, 2020	2:00 AM	2:30 AM	Last of A Breed
Boss gzp	Networks	INSP TV	Tuesday, July 7, 2020	8:00 PM	9:00 PM	Mountain Men
Boss gzp	Networks	INSP TV	Wednesday, July 8, 2020	8:00 PM	9:00 PM	Mountain Men
Boss gzp	Networks	HISTORY	Thursday, July 9, 2020	5:00 PM	6:00 PM	Mountain Men
Boss gzp	Networks	HISTORY	Thursday, July 9, 2020	6:00 PM	7:00 PM	Mountain Men
Boss gzp	Networks	HISTORY	Thursday, July 9, 2020	7:00 PM	8:00 PM	Mountain Men
Boss gzp	Networks	HISTORY	Thursday, July 9, 2020	8:00 PM	9:00 PM	Mountain Men
Boss gzp	Networks	INSP TV	Thursday, July 9, 2020	8:00 PM	9:00 PM	Mountain Men
Boss gzp	Networks	HISTORY	Thursday, July 9, 2020	8:00 PM	9:00 PM	Mountain Men
Boss gzp	Networks	HISTORY	Thursday, July 9, 2020	8:00 PM	9:00 PM	Mountain Men
Boss gzp	Networks	HISTORY	Thursday, July 9, 2020	8:00 PM	9:00 PM	Mountain Men
Boss gzp	Networks	HISTORY	Friday, July 10, 2020	8:00 PM	9:00 PM	Mountain Men
Boss gzp	Networks	HISTORY	Friday, July 10, 2020	8:00 PM	9:00 PM	Mountain Men

**Mountain Men**

5:00 PM - 6:00 PM  
S09E03

Tom and Sean search for better trapping grounds; Jake seeks revenge on the lion that injured his hound; Eustace and Raleigh struggle to fix a storm-damaged bridge.  
Actor(s): Eustace Conway, Marty Meierotto, Tom Oar, Rich Lewis, Morgan Beasley, Jason Hawk

winPTV Search Stats

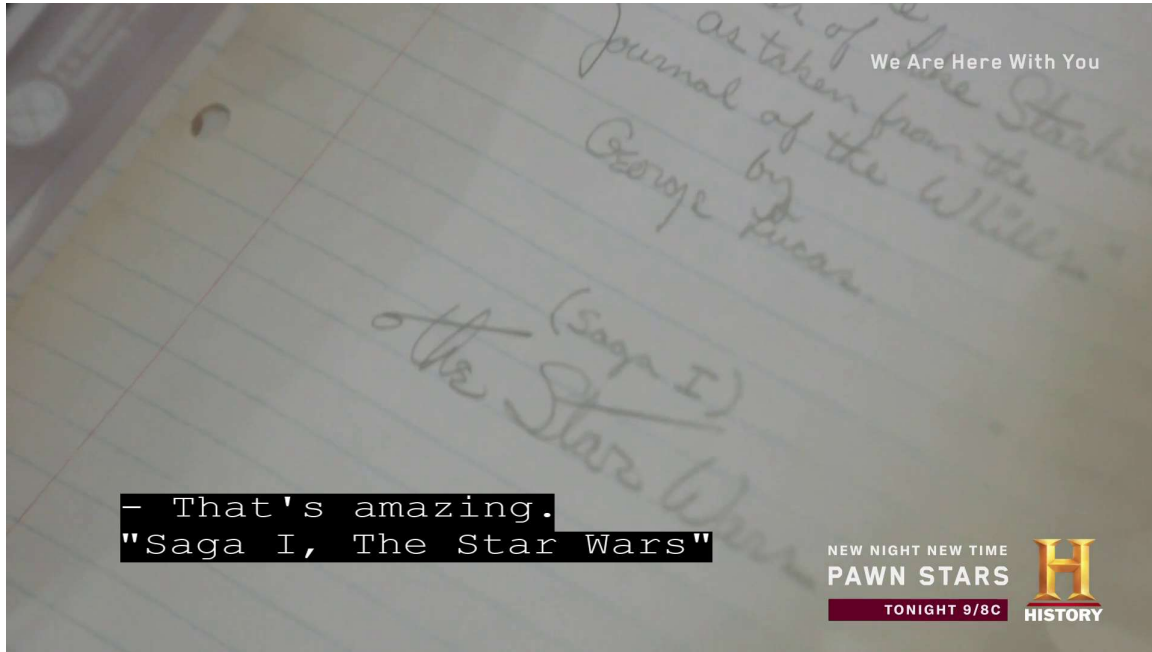
**HISTORY: 1920x1080 60 FPS**

### Notes:

- It takes 10 seconds to determine the size and FPS for the channel.
- During that 10 seconds, a stream from your provider will be being used.
- The more guide data is available, the further ahead the guide data can be searched.

## Subtitles

While a stream is playing, selecting the Subtitles menu option, or pressing F7 will open a dialog allowing you to select a particular subtitle/close-caption or turn off subtitle display.



## Stream Information

While a stream is playing, selecting the Stream Info menu item, or pressing Ctrl-I gives you some information on the stream.



## Chromecast

Chromecast is supported to allow easier viewing on your TV. If you have only one Chromecast capable device on your network (remember that most Android TV devices like the Nvidia Shield are Chromecast capable) it will be used automatically. If you have more than one, a dialog will open to have you select the device you wish to use.

Note that sometimes you may need to go through the process more than once before casting starts working due to network latency and other issues.

## Catch-Up

Some service providers offer a option called “catch-up”. This option allows you to watch specific shows on specific channels that have been aired in the past 1 or 2 days. Not all providers have this option, and the providers that do typically do not offer it on all channels. If your provider has this option available, check the box in the *Settings* dialog for that provider and *Apply*.



winPTV Settings

Provider 1 Provider 2 Provider 3 Provider 4 Provider 5 General Ratings

Provider Name:   Catch Up

M3U URI:

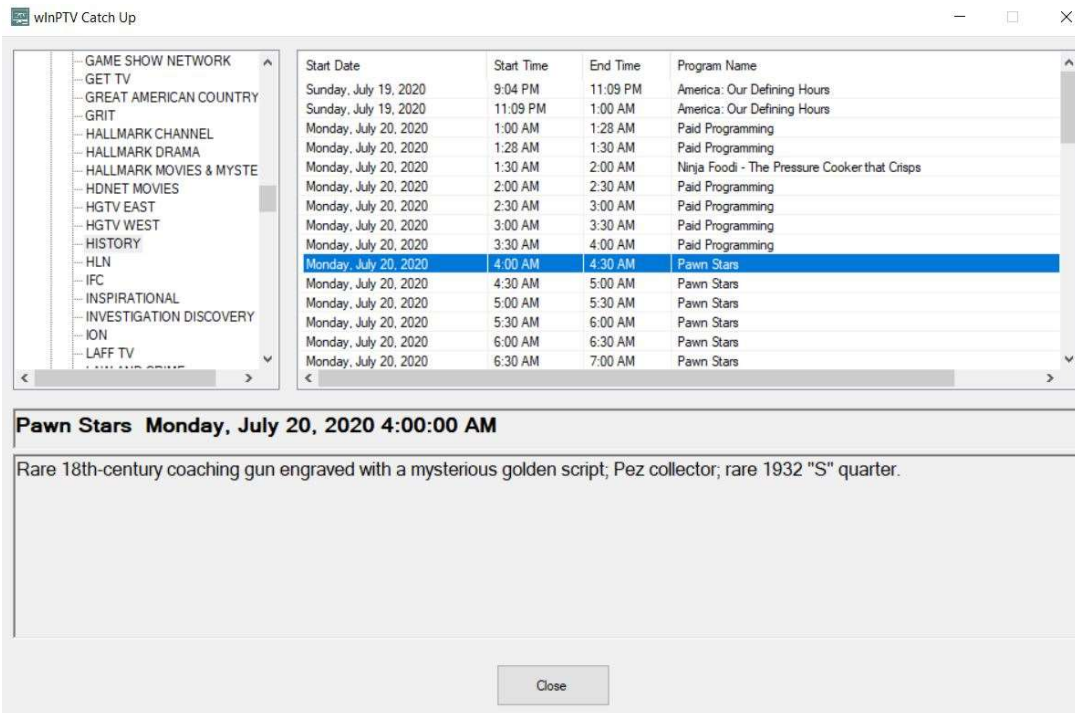
EPG URI:

URI's can be specified as a web URL or local file definition.

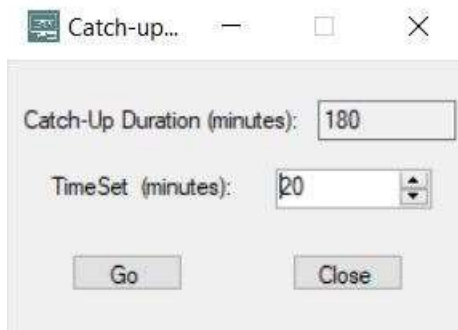
Active

In the *Catch-Up* menu select *Catch-Up*. All groups and channels that have catch-up offered by your provider for all providers you have configured to have catch-up will be shown. Selecting a channel will display all the viewable catch-up shows for that channel.





Double clicking on that show will attempt to play that stream. If you want to jump ahead or skip back when the catchup stream is playing, open the *TimeSet* dialog, also in the *Catch-Up* menu.



This dialog shows you how long the catch-up program is, in minutes. Select where you want to skip to in the stream, in minutes. Then hit the *Go* button. The stream will go to that time period.

Right clicking on a show and selecting *Download* from the context menu will download that show.

Note that this catch-up information can be a bit sketchy from the providers. For example, some providers need some length of time after a show is over before it is available fully to be replayed. It will still show up in the catch-up dialog as an option however. If it does not play, select it again an hour or two later.

Right clicking on a show and selecting *Download* from the context menu will download that show.

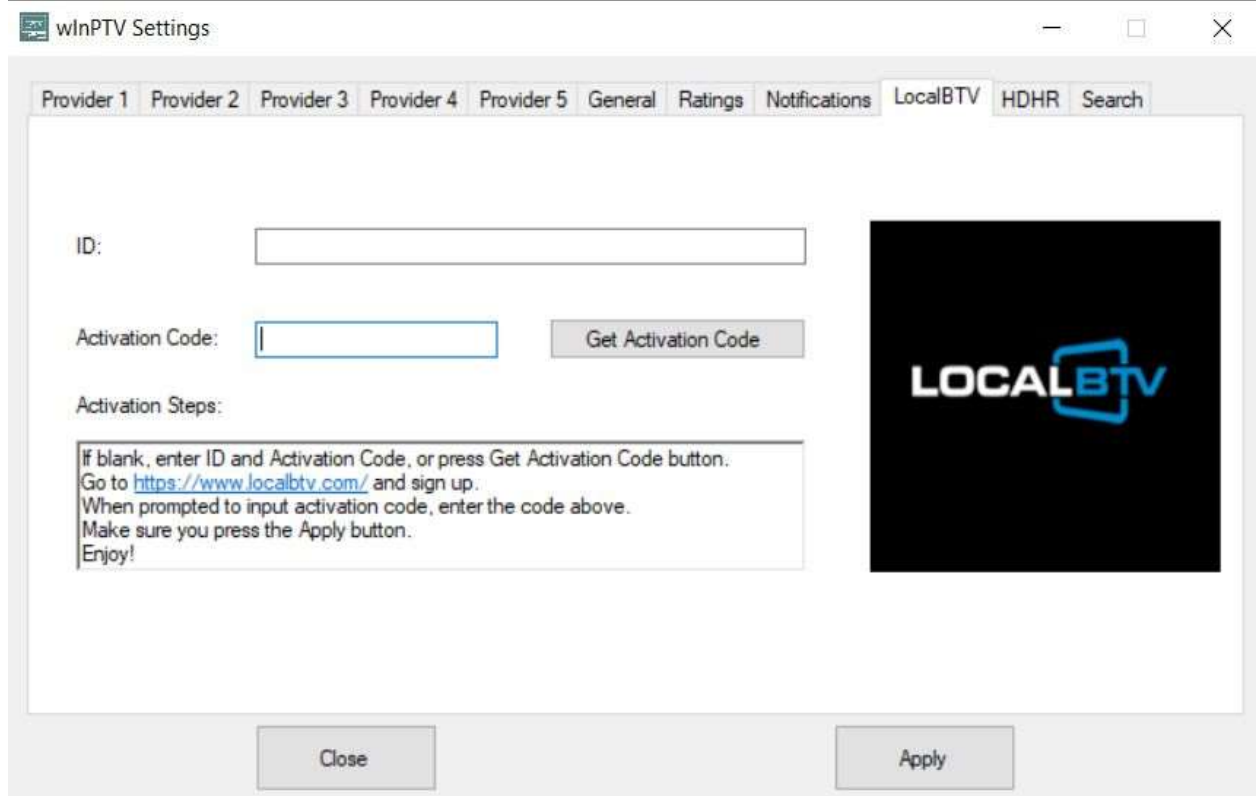
## LocalBTV

The LocalBTV service (<https://www.localbtv.com>) is also supported in wInPTV.

Note that even if LocalBTV does not fully support your area yet, you can still watch their national feeds.

To setup for LocalBTV use:

- Go to the wInPTV settings dialog and select the LocalBTV tab.

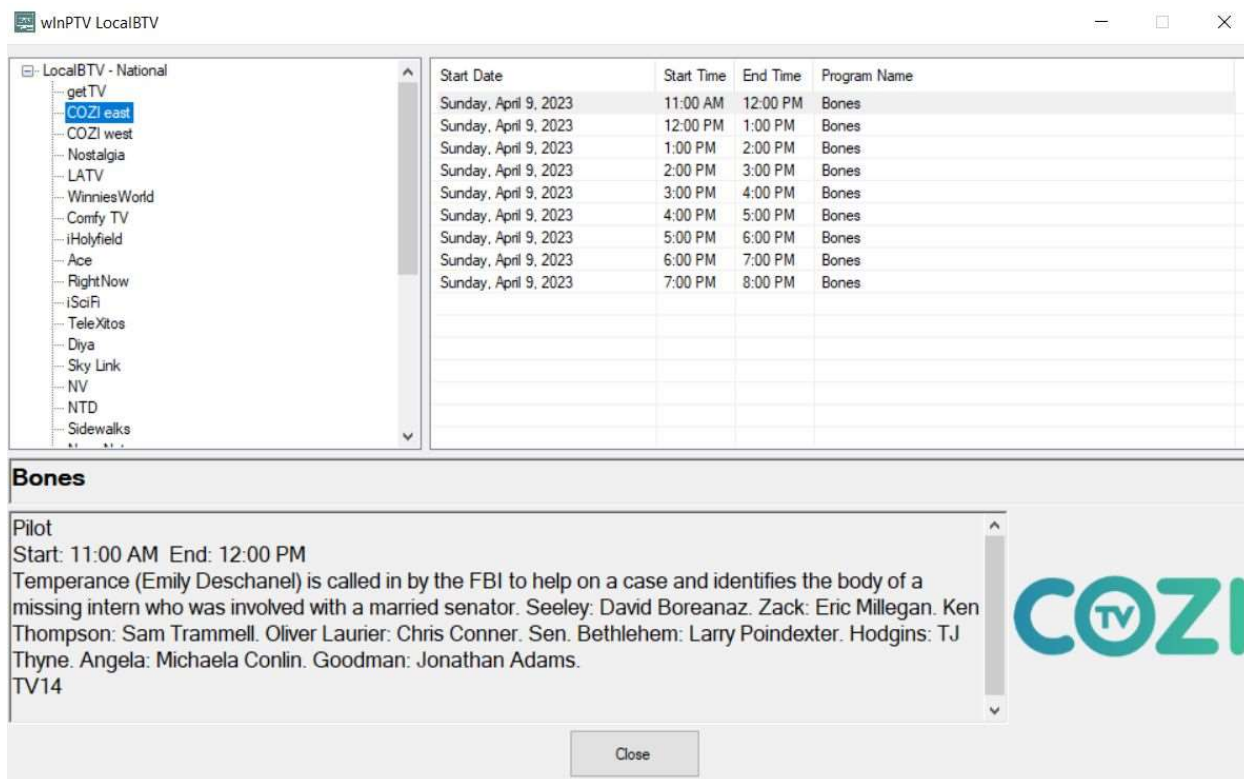


The screenshot shows the 'wInPTV Settings' dialog box with the 'LocalBTV' tab selected. The dialog has a title bar with standard window controls and a tabbed interface. The 'LocalBTV' tab is active, showing a form with the following elements:

- Provider 1** | **Provider 2** | **Provider 3** | **Provider 4** | **Provider 5** | **General** | **Ratings** | **Notifications** | **LocalBTV** | **HDHR** | **Search**
- ID:** [Text input field]
- Activation Code:** [Text input field] [Get Activation Code button]
- Activation Steps:**  
[Text box containing instructions: "If blank, enter ID and Activation Code, or press Get Activation Code button. Go to <https://www.localbtv.com/> and sign up. When prompted to input activation code, enter the code above. Make sure you press the Apply button. Enjoy!"]
- LOCALBTV** logo image.
- Close** button | **Apply** button

- Press the Get Activation Code button, then press the Apply button to be safe.
- Go to <https://www.localbtv.com> in your browser and sign up for the service.
- When prompted to enter a activation code, enter the code from this dialog.
- You should see confirmation on the web page that activation was successful.

To view LocalBTV, select the LocalBTV tab from the winPTV main menu. You will see a familiar EPG dialog:



The screenshot shows a window titled "winPTV LocalBTV". On the left is a channel list under "LocalBTV - National" with "COZI east" selected. On the right is an EPG table for Sunday, April 9, 2023, showing "Bones" programs from 11:00 AM to 8:00 PM. Below the table is a detailed view for the "Bones" pilot episode, including the start/end time, a synopsis, the cast list, and the TV14 rating. A "Close" button is at the bottom.

Start Date	Start Time	End Time	Program Name
Sunday, April 9, 2023	11:00 AM	12:00 PM	Bones
Sunday, April 9, 2023	12:00 PM	1:00 PM	Bones
Sunday, April 9, 2023	1:00 PM	2:00 PM	Bones
Sunday, April 9, 2023	2:00 PM	3:00 PM	Bones
Sunday, April 9, 2023	3:00 PM	4:00 PM	Bones
Sunday, April 9, 2023	4:00 PM	5:00 PM	Bones
Sunday, April 9, 2023	5:00 PM	6:00 PM	Bones
Sunday, April 9, 2023	6:00 PM	7:00 PM	Bones
Sunday, April 9, 2023	7:00 PM	8:00 PM	Bones

**Bones**

Pilot  
Start: 11:00 AM End: 12:00 PM  
Temperance (Emily Deschanel) is called in by the FBI to help on a case and identifies the body of a missing intern who was involved with a married senator. Seeley: David Boreanaz. Zack: Eric Millegan. Ken Thompson: Sam Trammell. Oliver Laurier: Chris Conner. Sen. Bethlehem: Larry Poindexter. Hodgins: TJ Thyne. Angela: Michaela Conlin. Goodman: Jonathan Adams.  
TV14

Close

You will see all your channel options here. If your area is not fully supported by LocalBTV you will see just the national channels like shown above. If your area is supported, you will see the national channels plus the ones from your area.

Note that if you only have national channels now, if LocalBTV starts supporting your area fully, the channels will automatically appear here with nothing extra required by you.

### **Account Notification**

If check accounts on startup is checked, and a email address is provided, all active providers that have the XC API settings configured will have their account checked on startup. If the provider account is not active, or the expiration date is within 14 days, an email will be sent to the provided email address. Only one email will be sent per day for each provider. Pressing the Test button will send a test email.

## wInPTV Settings

Provider 1 Provider 2 Provider 3 Provider 4 Provider 5 General Ratings Notifications

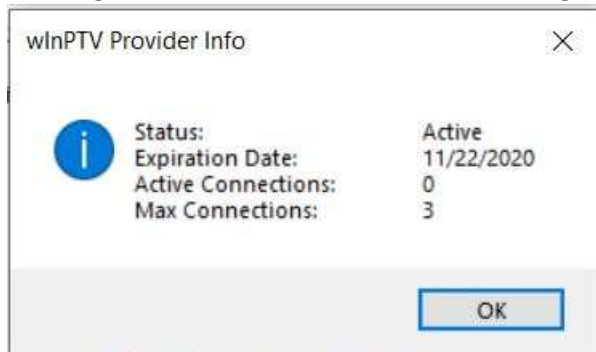
Check Accounts on Startup

Email Address:

### **Helpful Hints**

- On the Playlist and EPG dialogs, double clicking on a channel plays the channel.
- On the Playlist and EPG dialogs, right clicking on a channel allows you to add or remove that channel as a favorite.
- On the EPG dialog, single clicking on a channel brings up its program entry guide information.
- On the EPG dialog, single clicking on a program entry displays the programs description on the bottom of the dialog.
- The Channel History dialog allows you to select any of your past 10 channels to view again.
- The Find Channel dialog allows you to search across providers and groups for channels.
- The Channel History dialog is *not* persistent across wInPTV runs. Favorites however are.
- The Favorites list is saved to an XML file (wInPTVFavorites.xml) as wInPTV exits, in the programs application data directory (C:\Users\\AppData\Local\wInPTV). Assuming you have the same providers on multiple PCs (order in the settings dialog is irrelevant, however the configured provider name would need to be the same on both systems), you can put the XML file in the wInPTV directory and start the application to transfer favorites. Make sure you place the XML file only when wInPTV is not running.
- The EPG data displayed can only be as accurate or complete as the XMLTV files provide.
- If you wish to use multiple XMLTV files for a provider to get better and more complete guide information, I suggest using an application such as xTeVe or M3U4U to merge them all into one source per provider.
- You can record a show in progress by right clicking on a channel in either the Channel Select dialog or the EPG dialog and selecting Record.
- Recordings and snapshots are saved in the programs application data directory (C:\Users\\AppData\Local\wInPTV).
- The easiest way to navigate to the programs application data directory is to type %appdata% in Windows Explorer and hit return. Note that this will take you to the Roaming directory not Local. Just navigate up on level then down into Local and down one more into wInPTV.

- If a Channel Unique Identifier (CUID) exists for m3u file entries, wInPTV will honor them and will still be able to play favorites, even if their channel name and/or stream link changes.
- Pressing the Account Info button on the Settings dialog will show provider specific information



You are free to use this program as much as you wish free of charge. However, if you get value out of it, please consider donating whatever amount you are comfortable with to a local charity that benefits children such as Special Olympics.

**Legal Copyright Disclaimer:**

wInPTV does not verify whether IPTV providers hold the proper licensing for content delivered through said service. wInPTV and its author do not endorse or promote illegal activities tied to streaming or downloading copyrighted works. The end-user shall be solely responsible for media accessed through wInPTV.